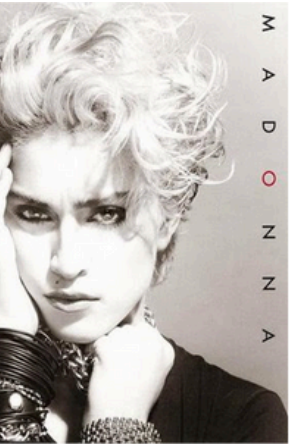




CELEBRITY DISC PROFILES



Discover which DiSC profile celebrities are? And who they might love working with OR who might be challenging, based on the magic of DiSC?

Explore the DiSC profiles of well-known personalities, from actors to politicians. By observing their public behaviours, we estimate their DiSC types. Below, find descriptions of each DiSC style and examples of celebrities who might exhibit these traits. Remember, these observations are informal and based on public personas. Which DiSC style resonates with you?

Take a peep below!

PRIMARY STYLE (D)



Dwayne 'The Rock' Johnson



Madonna



Madonna

Dominance

Assertive
Decisive
Direct
Impatient
Competitive
Risk taking
Strong Willed
Energetic
Ambitious

Influence

Outgoing
Persuasive
Enthusiastic
Social
Talkative
Charismatic
Impulsive
Collaborative
Emotional

PRIMARY STYLE (I)



Oprah



Kevin Hart



Taylor Swift

SEE 'S' & 'C'

PRIMARY STYLE (S)



Tom Hanks



Jennifer Aniston



Ed Sheeran

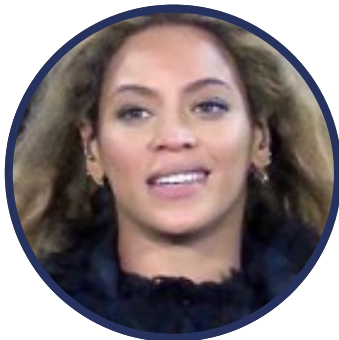
Steadiness

Reliable
Patient
Calm
Loyal
Co-operative
Consistent
Stable
Resistant to change
Passive

PRIMARY STYLE (C)

Conscientious

Analytical
Detail focus
Thorough
Organised
Methodical
Cautious
Objective
Critical
Perfectionist



Beyonce



King Charles III



Emma Stone

FRIEND
OR FOE?

FRIEND OR FOE?

The Rock Johnston

Gets On Well With: Kevin Hart (i)

Their complementary styles allow for a dynamic and entertaining partnership, where Kevin's charisma balances Dwayne's assertiveness.

Horror Partnership: Mark Zuckerberg (C)

Dwayne's direct and high-energy approach may clash with Mark's methodical and analytical style.

Dwayne 'The Rock' Johnston



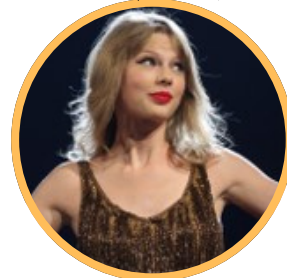
Taylor Swift

Gets On Well With: Emma Watson (S)

Emma's supportive and consistent nature can provide stability for Taylor's creative and influential personalities.

Horror Partnership: Jeff Bezos (C)

Taylor's need for social interaction and flexibility might not align with Jeff's analytical and highly structured approach.



Taylor Swift

VIEW MORE

discover DiSC
Reveal, Thrive, Achieve



FRIEND OR FOE?

Tom Hanks



Tom Hanks

Gets On Well With: **Oprah Winfrey (i)**

Oprah's enthusiasm and inspiration can be well-supported by Tom's steady and reliable presence.

Horror Partnership: **Madonna (D)**

Tom's calm and steady approach might be overwhelmed by Madonna's assertive and dynamic style.

Emma Stone

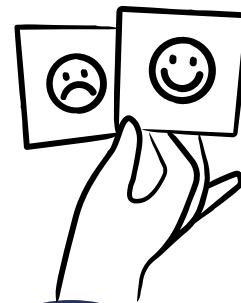


Gets On Well With: **Keanu Reeves (S)**

Keanu's steady and reliable nature can provide a balanced support for Emma's conscientious and organized approach.

Horror Partnership: **Will Smith (i)**

Emma's methodical and reserved nature might conflict with Will's outgoing and spontaneous personality.



Emma Stone

Having explored the DiSC profiles of various celebrities, it's clear how personality traits influence interactions and relationships. Our 'Friend or Foe' section further illustrates how these dynamics play out, showing famous personalities alongside their ideal collaborators and challenging counterparts. To gain a deeper understanding of your own DiSC style and learn how to navigate relationships in your professional life effectively, consider getting a detailed bespoke report. This will equip you with the skills and confidence to optimise interactions with both friends and foes in the real world of work. Speak to us today to be the best you can be with others, whilst futureproofing yourself to excel in the AI Age.